

3D Flat 1998 Title Configuration

To ensure the proper display of content released in 1998x1080 resolution, the projector must use a Title with a PCF file with the proper settings.

The purpose of this document is to provide instructions on how to create a new 3D Title file by editing an existing 3D Title file that already exists in the NEC DLP Projectors. These 3D Titles would have been created by your Systems Integrator. There are no standard naming conventions for Titles, therefore, before you begin you must verify the existence and the name of the appropriate Titles to be edited.

It is assumed that the person making the changes is authorized and already has the basic knowledge of how to edit a projector Title and how to verify the existence of required projector files. If you do not have the authority or knowledge of how to edit a projector Title or how to verify the existence of required projector files, then please contact your Systems Integrator.

Required Projector Files:

185_YCxCz_2048.PCF

or

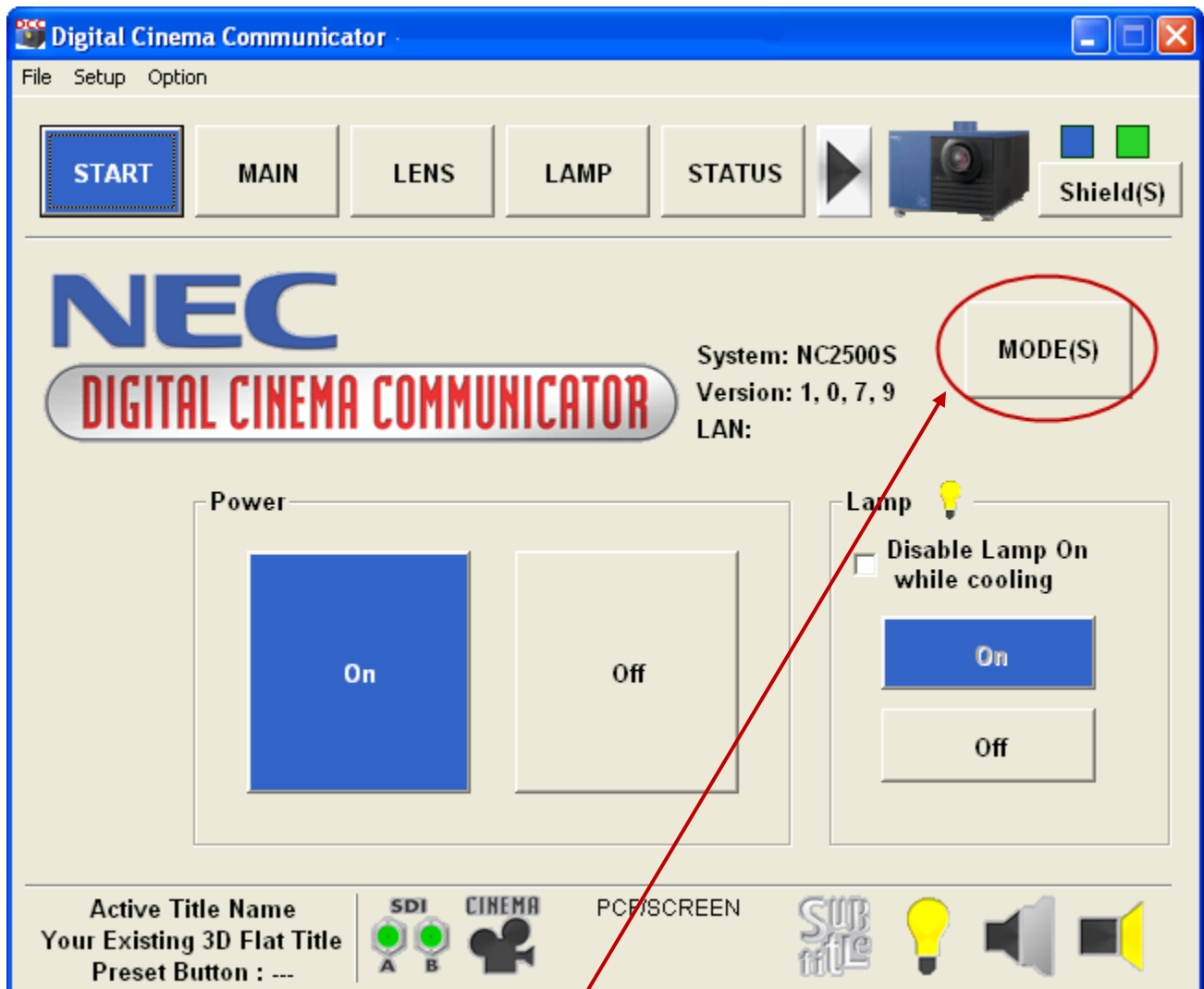
185_YCxCz_1920.PCF

Procedure Overview

1. Turn on projector in Lamp On mode
2. Using the NEC Digital Cinema Communicator (DCC) software, log in as Service Mode
3. Navigate to Title page and select existing 3D Flat Title for editing
4. Edit PCF settings and Save as a new PCF File
5. Save new configuration as a new Title
6. Verify that newly created Title is used to display content properly.

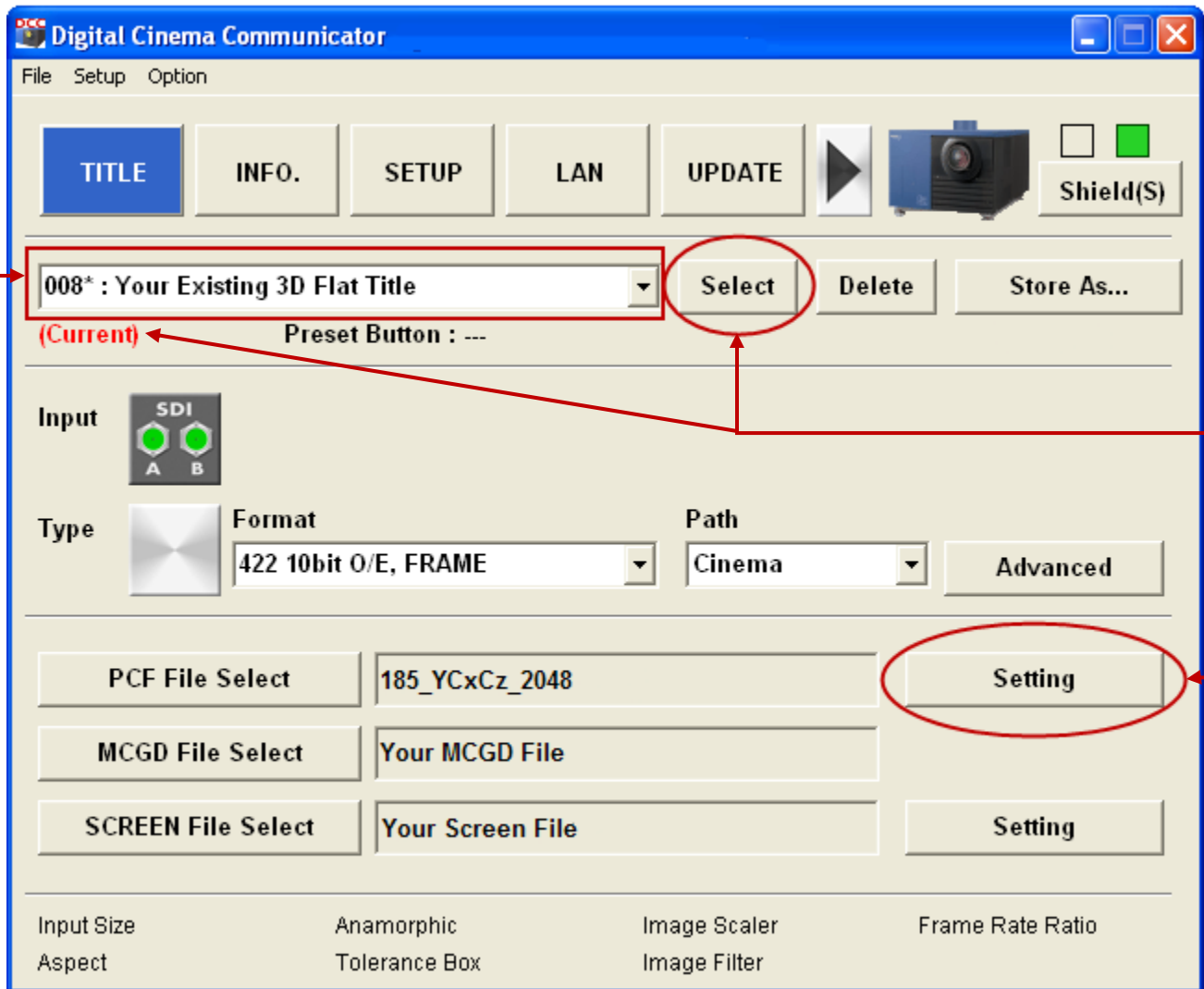
Procedure Instructions

1. Using Digital Cinema Communicator (DCC) control software, turn on projector in Lamp On mode



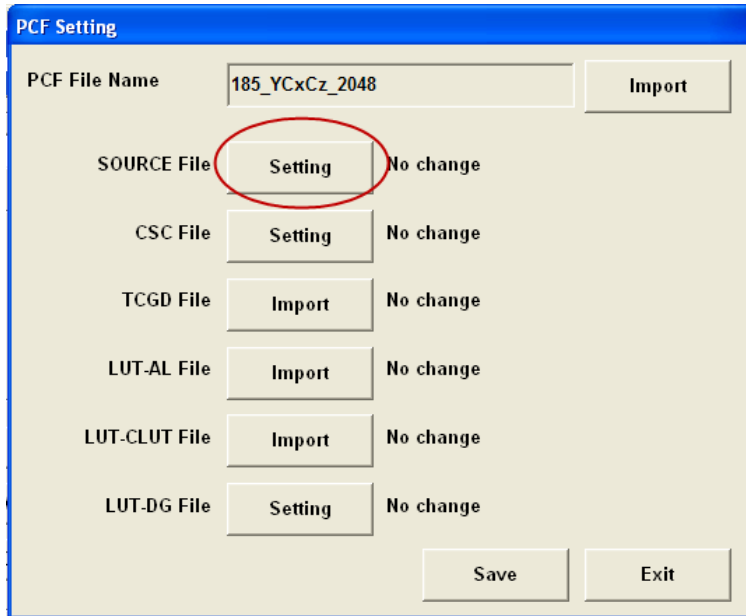
2. Log into the DCC in Service Mode
 - a. When in Service Mode, the button will have an "S"

3. Navigate to Title page and select existing 3D Flat Title for editing



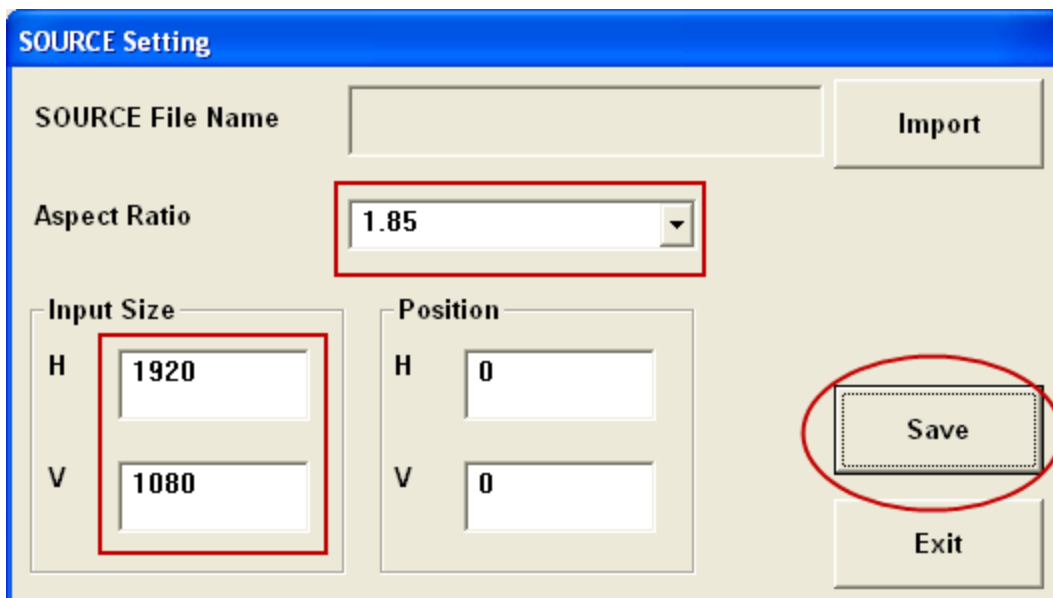
- If not already selected, use drop-down menu to choose an existing 3D Flat Title
- Click the Select button to load Title and the (Current) indicator will appear when loaded
- Click the PCF Setting button to edit the existing PCF File

4. Edit PCF settings and Save as a new PCF File



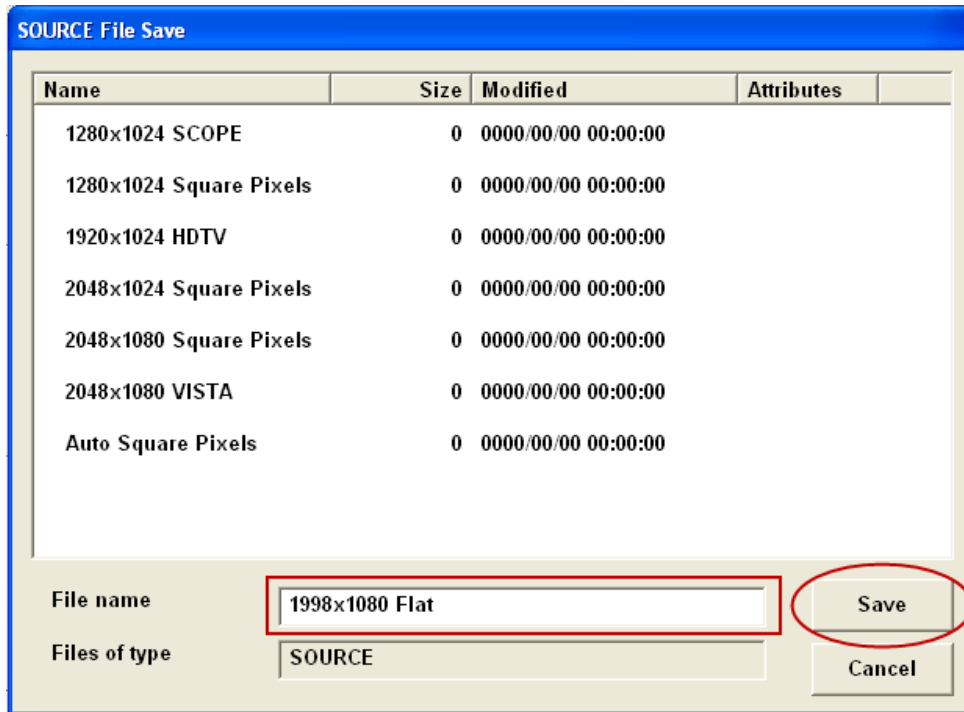
The PCF Setting dialog box has a blue title bar and a light beige background. At the top, there is a text field for 'PCF File Name' containing '185_YCxCz_2048' and an 'Import' button to its right. Below this, there are six rows of settings, each with a label, a button, and a status text: 'SOURCE File' with a 'Setting' button (circled in red) and 'No change' text; 'CSC File' with a 'Setting' button and 'No change' text; 'TCGD File' with an 'Import' button and 'No change' text; 'LUT-AL File' with an 'Import' button and 'No change' text; 'LUT-CLUT File' with an 'Import' button and 'No change' text; and 'LUT-DG File' with a 'Setting' button and 'No change' text. At the bottom right, there are 'Save' and 'Exit' buttons.

- a. Click on Source File button to edit Source Settings
- b. Enter Input Size and Aspect Ratio as shown, then click on Save

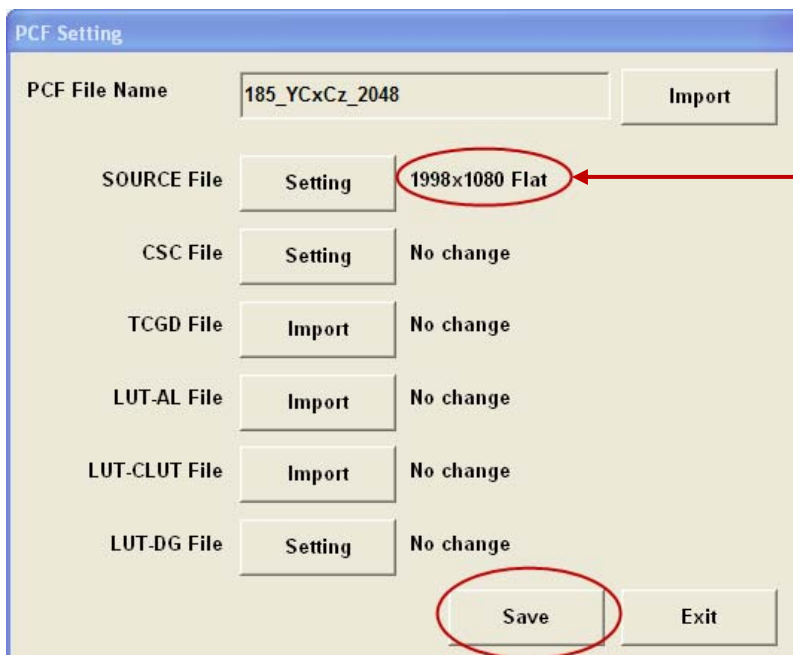


The SOURCE Setting dialog box has a blue title bar and a light beige background. It features a 'SOURCE File Name' text field with an 'Import' button to its right. Below is an 'Aspect Ratio' dropdown menu showing '1.85' (circled in red). The 'Input Size' section contains two text fields: 'H' with '1920' and 'V' with '1080' (both circled in red). The 'Position' section contains two text fields: 'H' with '0' and 'V' with '0'. At the bottom right, there is a 'Save' button (circled in red) and an 'Exit' button below it.

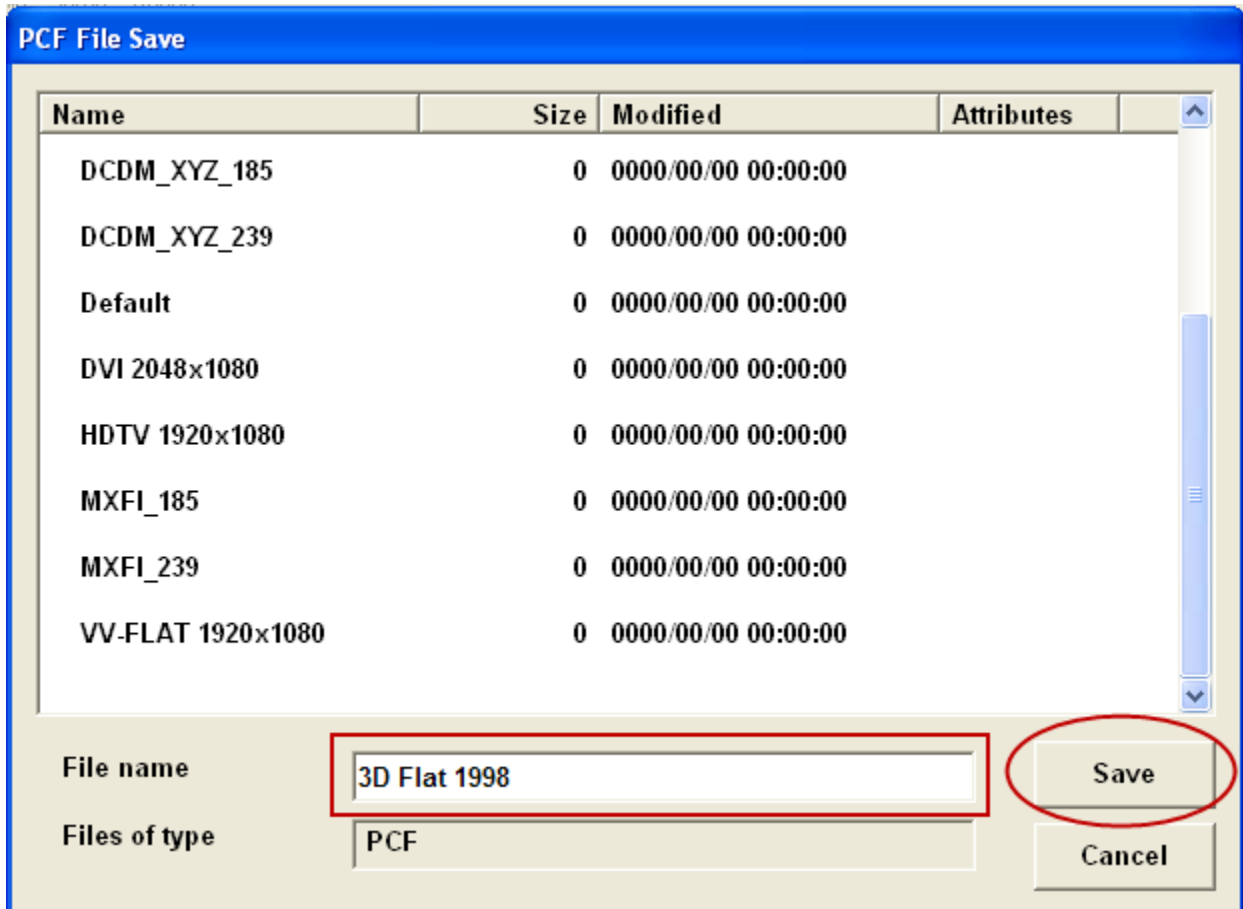
c. Name the new Source File “1998x1080 Flat”, and click on Save



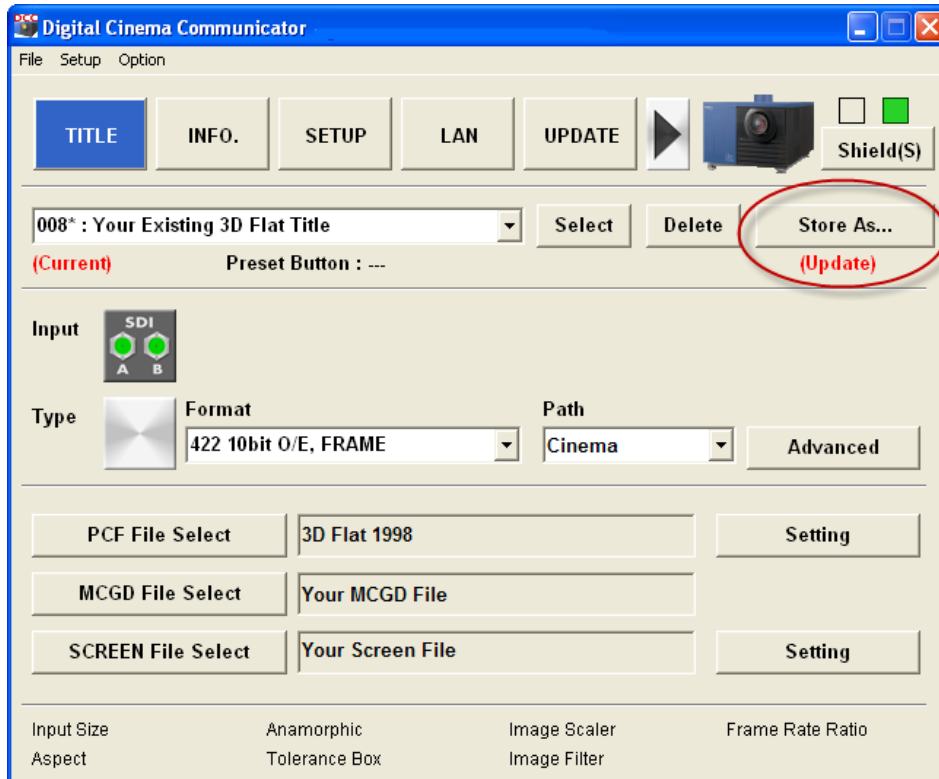
d. Navigate back to PCF Setting window and click on Save. New Source File name should be displayed



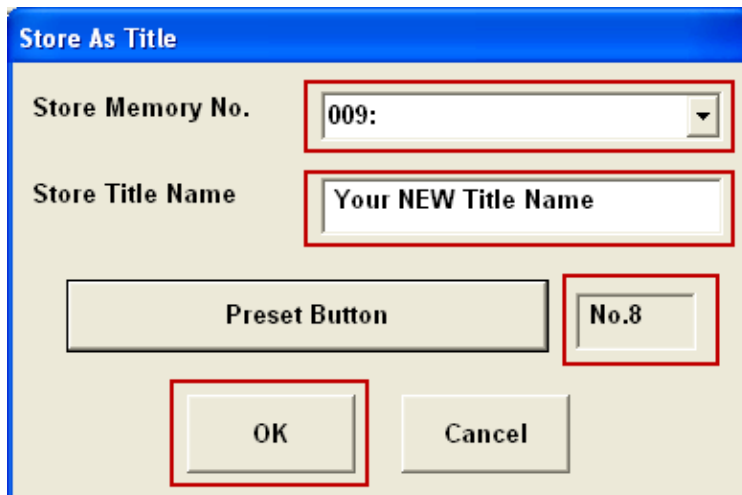
- e. Save new PCF configuration as a new PCF File named “3D 1998 Flat” or a naming convention that is easy to understand.



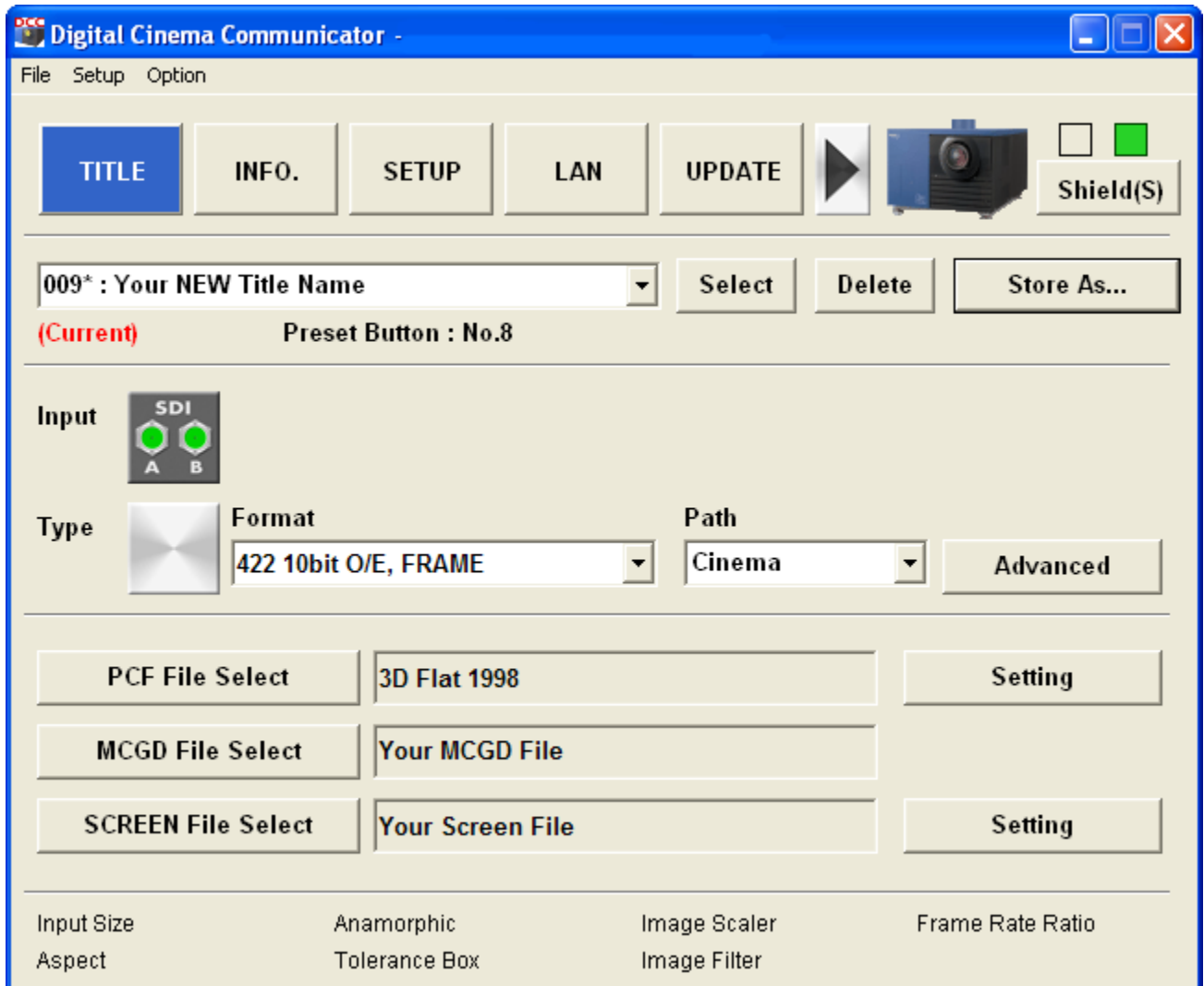
5. Navigate back to Title page and save new configuration as a new Title named “3D Flat 1998” or some other naming convention that is easy to understand.



- a. Click on “Store As...” button. (When “Update” appears it means something has been changed.)
- b. Choose a new Memory Number, a new Title Name, a Preset Button if desired and click OK



c. Your New Title is saved and automatically selected as the Current Title



6. Verify that newly created Title is used to display content properly.

This concludes the instructions for creating a new Title to support 1998x1080 resolution 3D feature content.